

The way ahead

Mimi Sheller, professor, Drexel University/Center for Mobility research

Christina Marolda, independent expert

Andree Woodcock, Professor, Coventry University, PI of TINNGO

Moderator: Hilda Rømer Christensen

TinnGO

Transport
Innovation
Gender
Observatory



This project received funding from the European Union's Horizon 2020 research and innovation programme under grant agreement N° 824349

Disclaimer: This document reflects only the author's view. Responsibility for the information and views expressed therein lies entirely with the authors. The Innovation and Networks Executive Agency (INEA) and the European Commission are not responsible for any use that may be made of the information it contains.

The way ahead – speakers:



Andree
Woodcock

Andree WOODCOCK, is a former Daphne Jackson Fellow and member of the Centre for Memory, Arts and Communities in the Faculty of Arts and Humanities and affiliate of the Future Transport and Cities Research Centre at Coventry University (UK). She is PI of H2020 CIVITAS SUITS and H2020 TInnGO projects and was PI of FP7 METPEX and RCUK funded Wemobile projects. All projects share a systems and transport focus and a need to address gender and diversity issues to make future transport inclusive and increase accessibility and opportunity. Within TInnGO her key research has been in relation to D9.4 looking at gender and diversity issues in research and development. Andree will chair the TInnGO Multistakeholders' Forum.



Cristina
Marolda

Maria Cristina MAROLDA, has been a Senior Policy Officer in charge of Research and Innovative Transport Systems in the EC Directorate General for Mobility and Transport. She was responsible for long-term R&I strategy design in sustainable mobility, caring in particular the aspects of logistics and infrastructure, until her retirement in May 2018.

She is graduated in Technology of Architecture at the University of Rome, where she started her professional career. In 1991 she joined the European Commission, following the developments of the RTD Framework Programmes over the years.

She has always been engaged in Gender Equality issues, both in Science and Research and in Policy Making related to Mobility and Transport.



Mimi Sheller

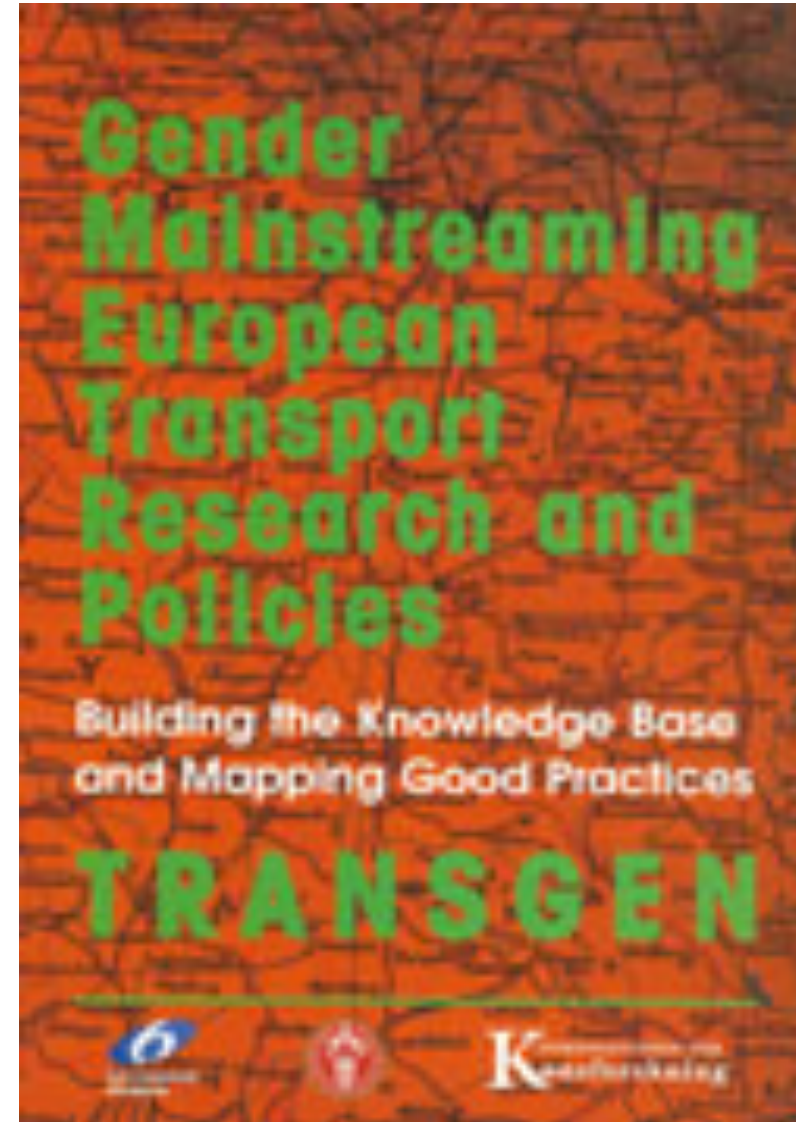
Dr. Mimi SELLER, Ph.D., is Professor of Sociology, Head of the Sociology Department, and founding Director of the Center for Mobilities Research and Policy at Drexel University in Philadelphia. She is founding co-editor of the journal *Mobilities* and past President of the International Association for the History of Transport, Traffic and Mobility. She has authored twelve books, including *Island Futures: Caribbean Survival in the Anthropocene* (Duke University Press, 2020); *Mobility Justice: The Politics of Movement in an Age of Extremes* (Verso, 2018); and *Aluminum Dreams: The Making of Light Modernity* (MIT Press, 2014). As co-editor with John Urry of *Tourism Mobilities* (2004) and *Mobile Technologies of*

TiNNGO –

looking back and looking forward

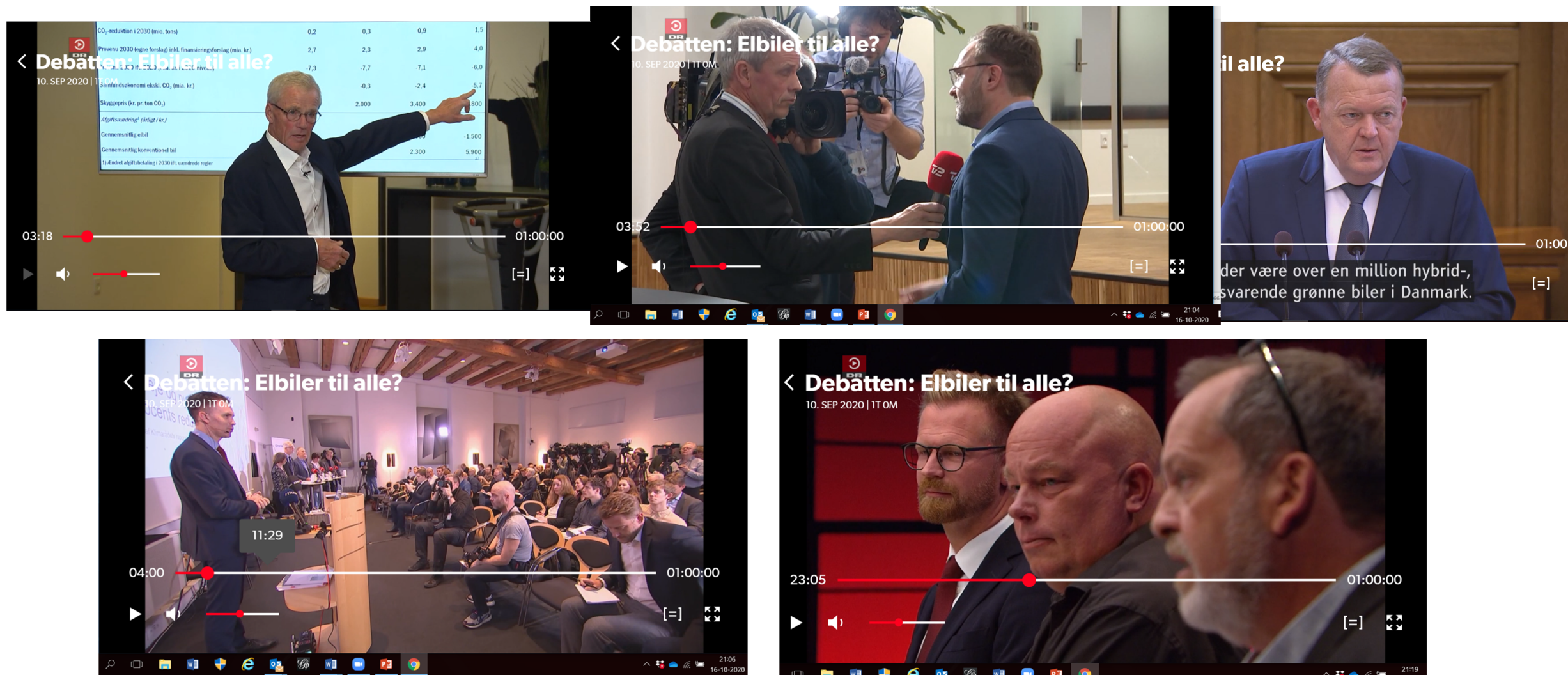
Lots of wasted knowledge,
strategies, recommendations no or
little impact on policy, research
political cultures etc

Game change and lasting impacts

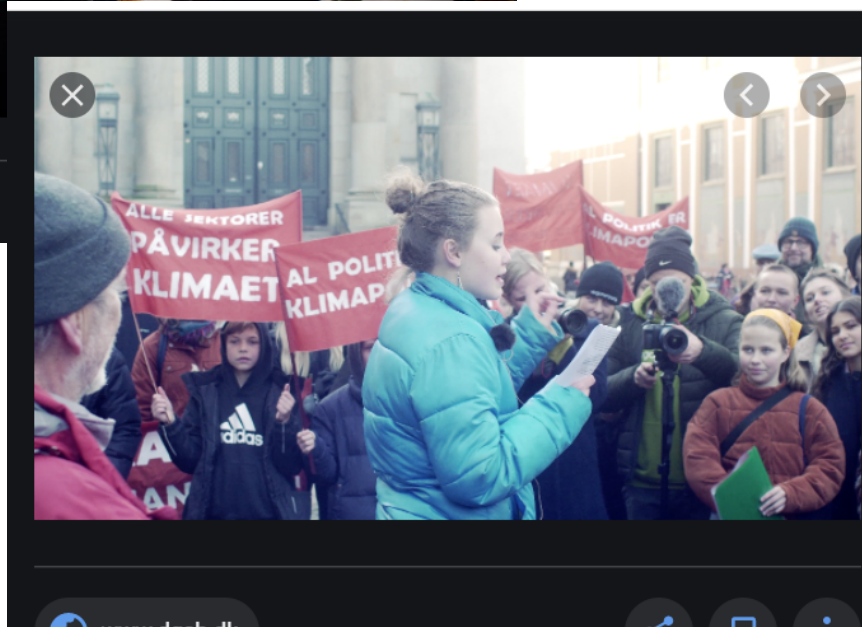


problem and paradox. smart mobility discourses

- insiders and outsiders



Women as outsiders in climate and smart transport policy..



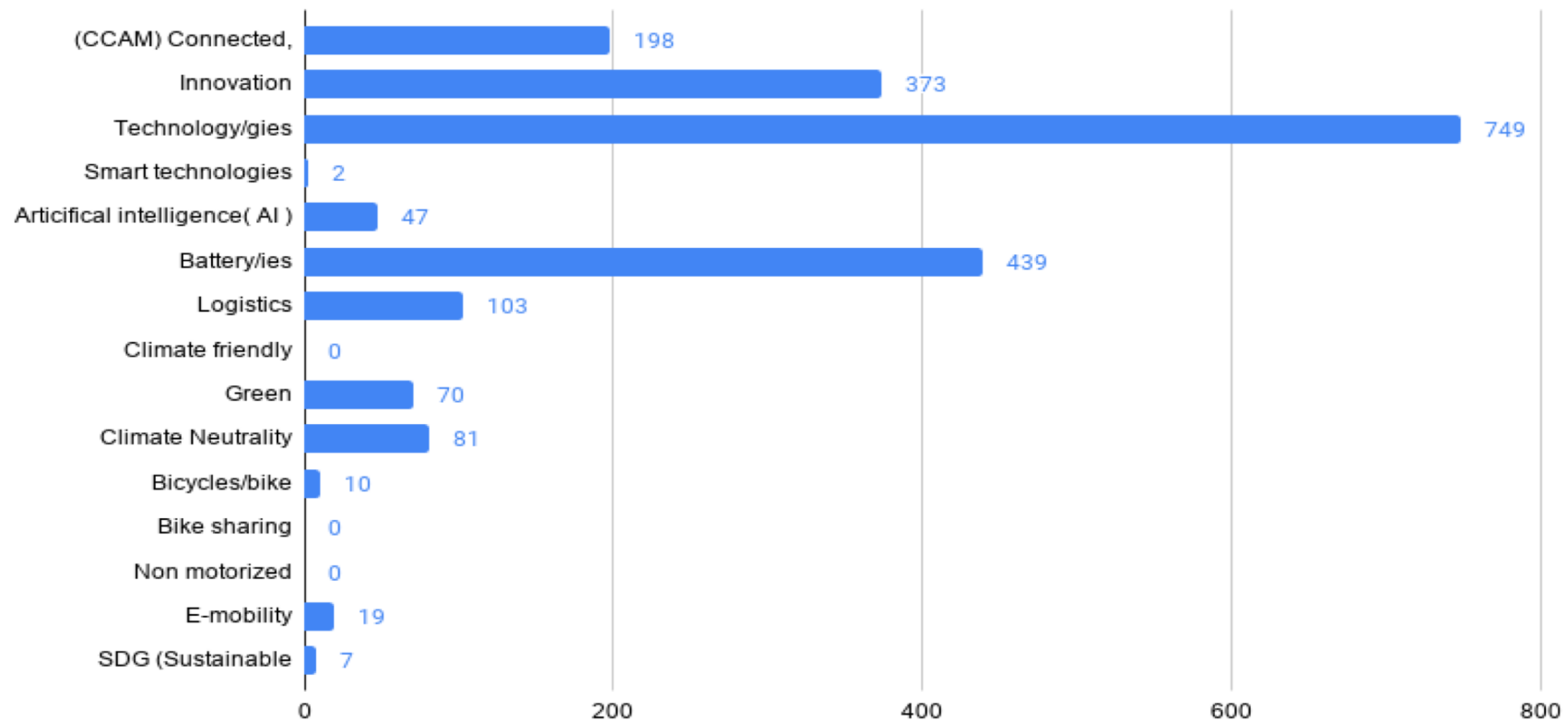
Climate conversations become dull

Its crazy that that people still think that women do not have insight in natural science --- most people only debates minor details within the same technical framework, intensity disappears from the climate conversation.

Horizon Europe

Draft Work programme 2021-2022 *Cluster 5 ('Climate, Energy and Mobility')*

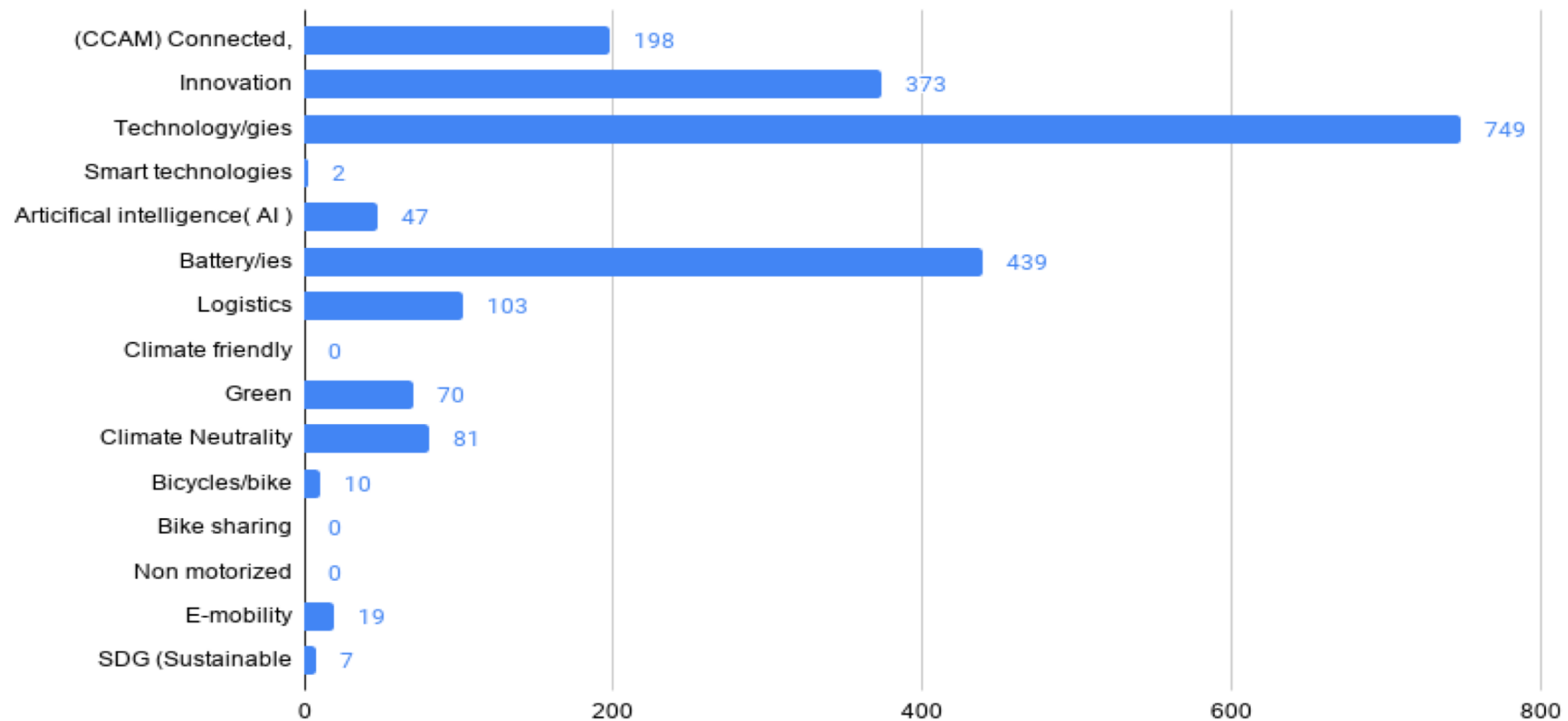
Frequency of tech/transportation keywords (N=132027)



Horizon Europe

Draft Work programme 2021-2022 *Cluster 5 ('Climate, Energy and Mobility')*

Frequency of tech/transportation keywords (N=132027)



Challenges and ways forward

Concepts: Gender smart transport - problems and potentials

Politics and strategies: Gender smart transport – how to translate concepts and principles into politics/ and research strategies.

What are the most pressing issues – conceptual – political

High level expert committee on Gender smart transport, close to the EU Commission?



This project received funding from the European Union's Horizon 2020 research and innovation programme under grant agreement N° 824349

Disclaimer: This document reflects only the author's view. Responsibility for the information and views expressed therein lies entirely with the authors. The Innovation and Networks Executive Agency (INEA) and the European Commission are not responsible for any use that may be made of the information it contains.